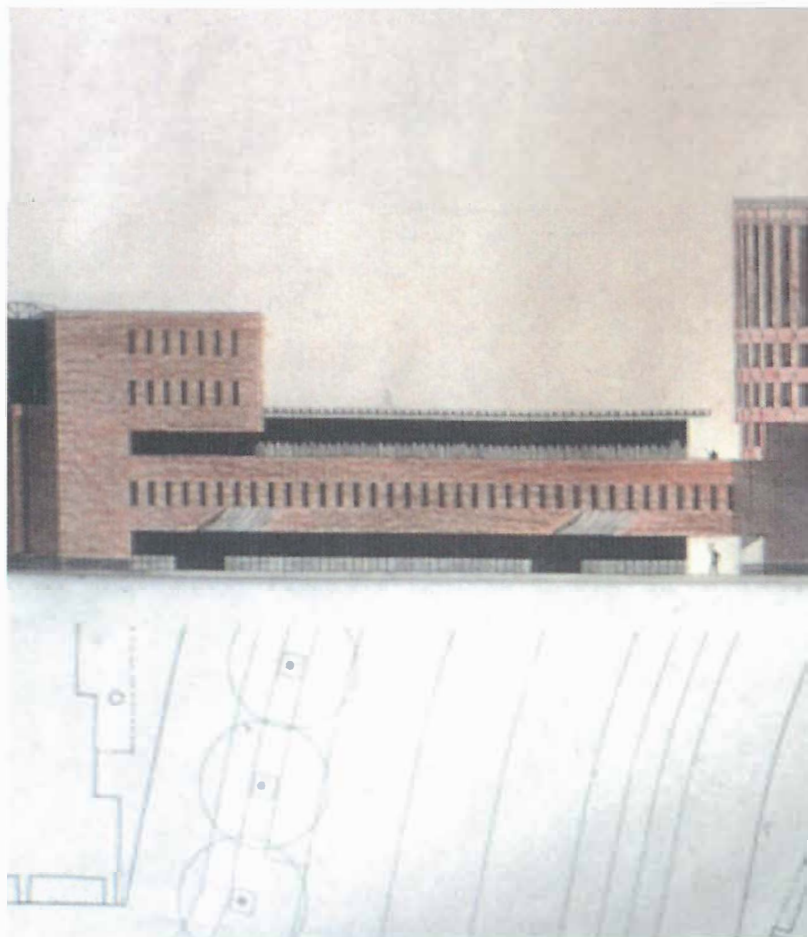
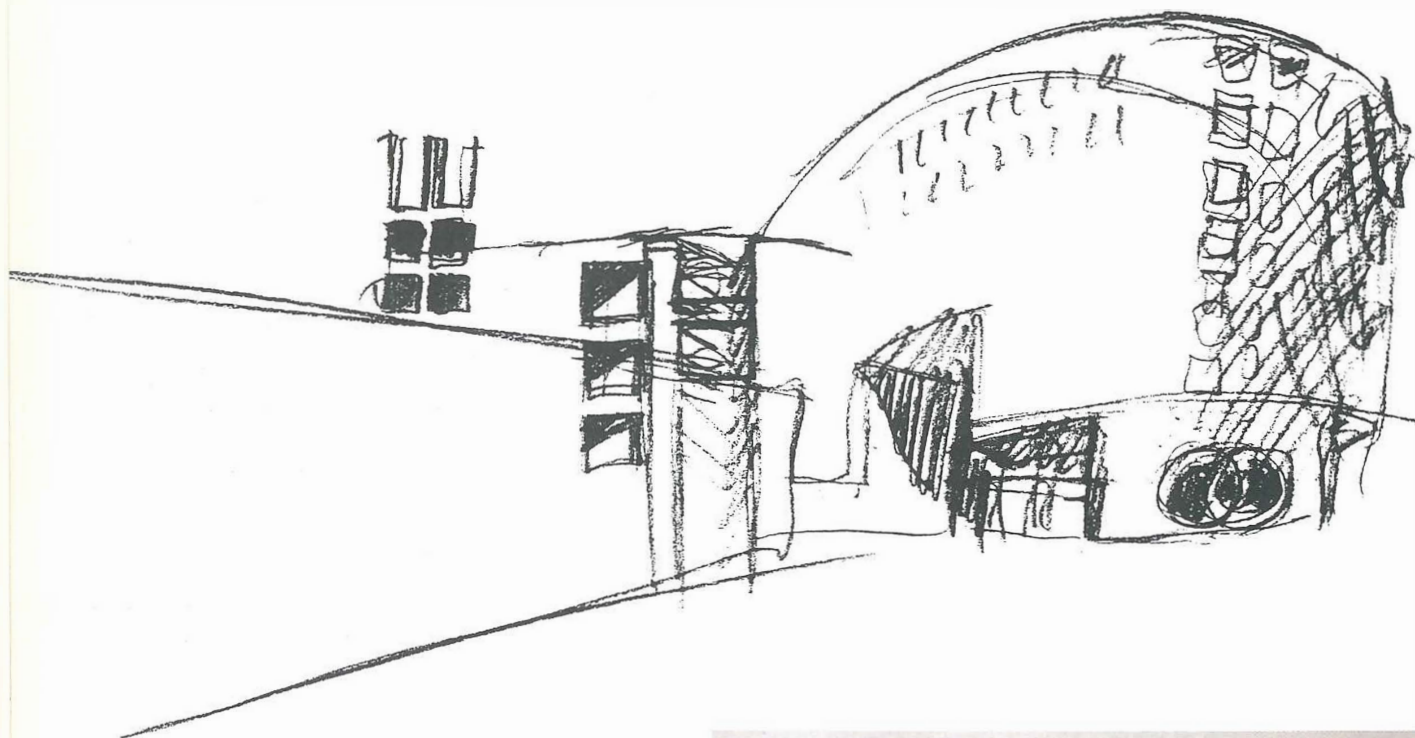


A Fortaleza - Habitações e escritórios

La Fortezza - Apartments and offices

Mario Botta

tradução Tatiana Alarcon e Mauricio Masson



Mario Botta fez vários estudos e projetos para o bloco na curva externa da Avenida Céramique.

Um programa muito denso com uma combinação de escritórios e habitações em um local proeminente, porém difícil. Como resultado de um workshop, ele propôs introduzir um movimento contrário na curva, diferentemente do plano original.

No plano de Botta, três partes constituintes podem ser reconhecidas: um alto cilindro de nove andares, no qual os apartamentos são agrupados ao redor de um pátio interno (com um café/restaurante no térreo e o primeiro andar em curva) e, simetricamente anexado a isto, estão duas alas (3 a 5 andares), nas quais encontram-se escritórios. As entradas principais dos escritórios estão no lado na Avenida, com uma entrada secundária nas ruas laterais. A entrada para o estacionamento subterrâneo pode ser alcançada através do pátio interno.

No Sphynxlunet/Clermonthunet o cilindro é aberto em toda sua altura, e o andar térreo é aberto por várias incisões. Isto cria vistas inesperadas no térreo; o cilindro torna-se mais arejado e escultural do que seria normalmente esperado para os andares. Os apartamentos têm *loggias*.

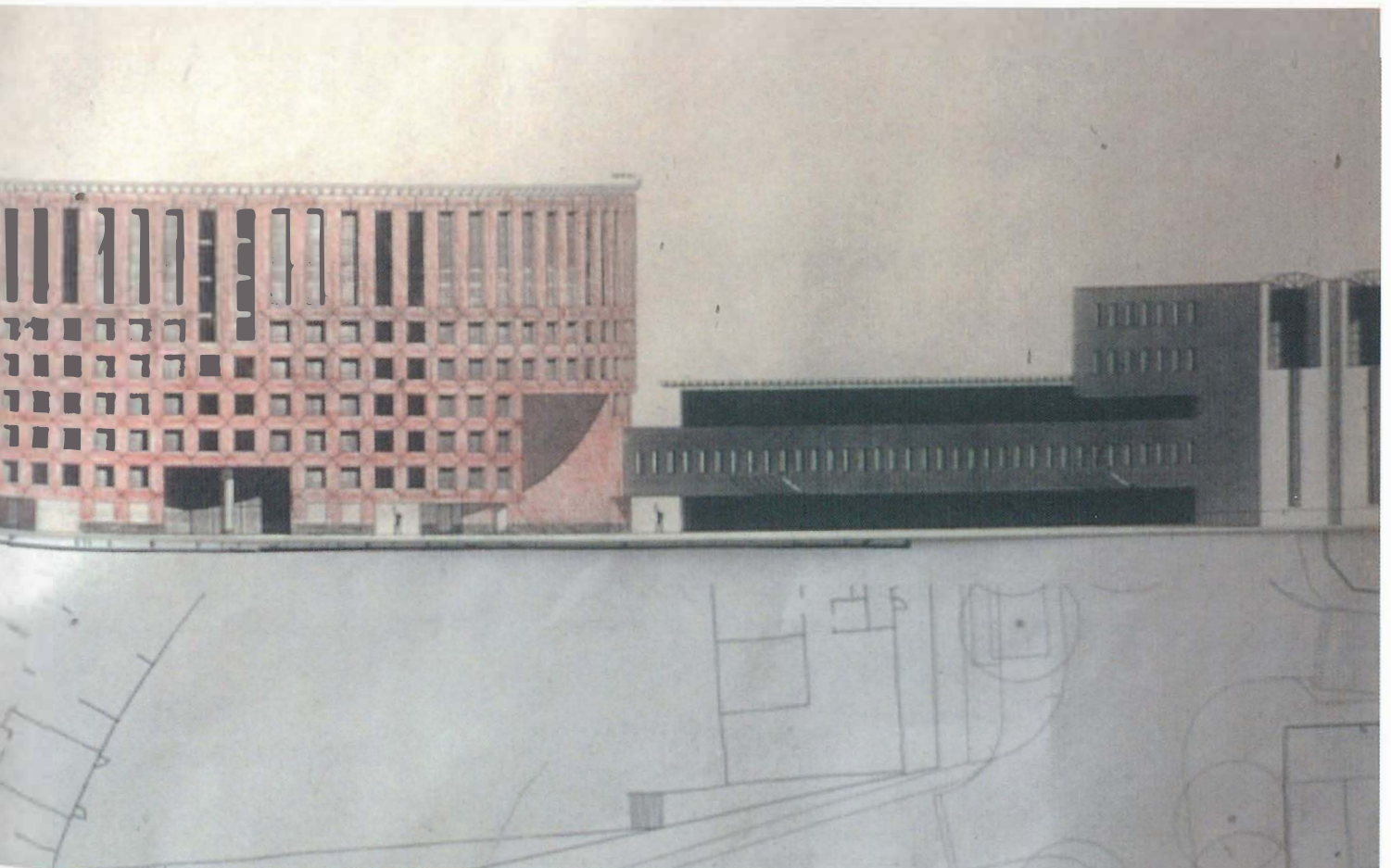
Todo complexo é executado em um padrão de tijolos, típico de Botta: o cilindro se torna incomum pela alternância horizontal e vertical da alvenaria, enquanto os escritórios são executados em simples faixas de tijolos. Os tijolos são avermelhados tendendo para o marrom, as juntas horizontais são planas enquanto as verticais são fundas. O cercamento é em ferro e, assim como a cobertura de entrada e revestimentos, revestido com uma camada preta.

Mario Botta has done a large variety of studies and designs for the block in the outside curve of the Avenue Céramique. An overcrowded programme with a combination of offices and houses at a prominent but difficult location. As a consequence of a studio day he has proposed to introduce a counter movement in the curve, contrary to the original plan.

In Botta's plan three constituent parts can be recognized: a tall cylinder of nine storeys, in which the apartments are grouped round an inner court (with a cafe/restaurant on the ground and first floor in the curve), and symmetrically attached to this are two wings (3-5 storeys), in which offices are found. The head entrances of the offices are on the Avenue-side, with a secondary entrance from the side streets. The entry to the underground car park can be reached via the inner court.

On Sphynxlunet/Clermontlunet the cylinder is cut open over its full height and the ground floor is opened out further by various incisions. This creates unexpected vistas on the ground floor; the cylinder becomes more airy and sculptural than would be expected from the floor plan. The apartments are provided with *loggias*.

The entire complex is executed in a brick pattern which is typical for Botta: the cylinder becomes unusual because of the alternation of horizontal and vertical masonry, while the offices are executed in simple stretcher bond. The bricks are reddish brown, horizontal joints are flat-jointed, vertical joints are receding. Fencing is carried out in steel and, just as the casings, canopies, etc., covered with a black powder coating.



Perspectivas

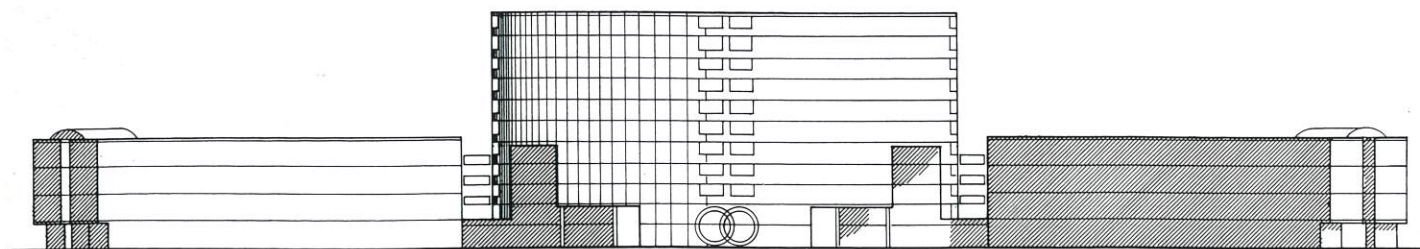
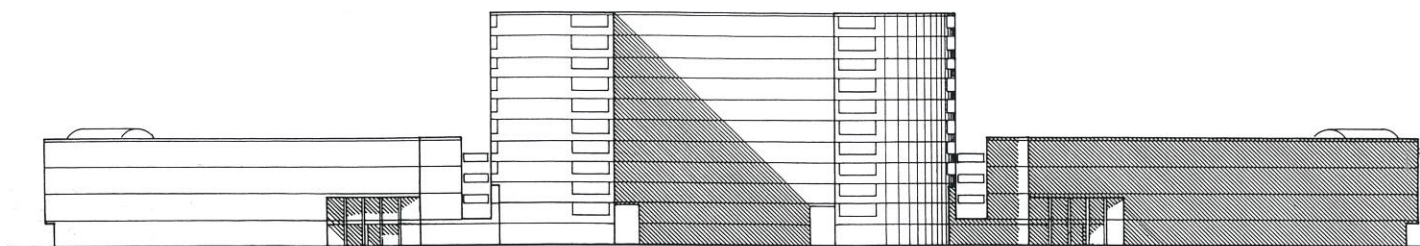
Elevações sudeste e noroeste

Croquis de evolução do projeto



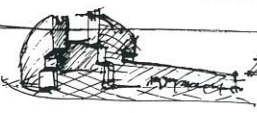


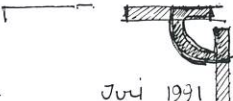

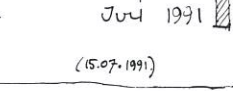

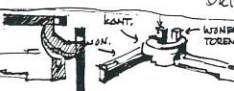




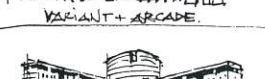





Perspectives

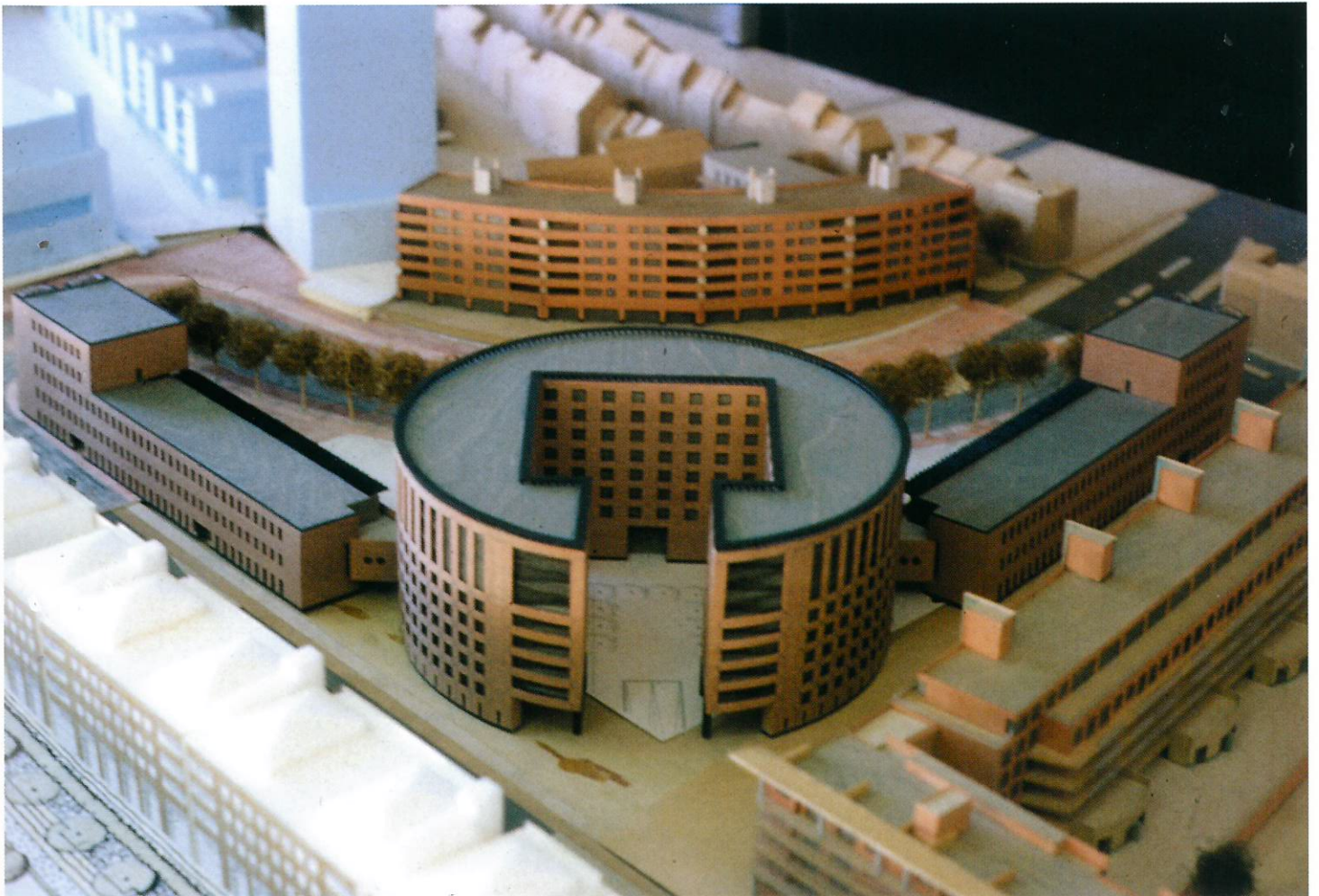
South-east and north-west elevations

Sketchs of design development



VERSCHILLENDE VARIANTEN - THE BOTTS HISTORY 25.03.94

		(15.03.91)	①
		APRIL 1991	
TUSSENSTUDIE 24.4.1991 ②			
		JUNI 1991	③
TUSSENSTUDIE (STELIERSESSIE)			
		JULI 1991	④
TUSSENSTUDIE			
		(15.07.1991)	
TUSSENSTUDIE / RECHTBANK!			
		OCTOBER/NOV. 1991	⑤
TUSSENSTUDIE / RECHTBANK!			
		08-02-1993	⑥
TUSSENSTUDIE / RECHTBANK!			
		04-06-93	⑦
TUSSENSTUDIE / RECHTBANK!			
		FEBR. '94	⑧
TUSSENSTUDIE / RECHTBANK!			
		17 MEI '94	⑨
TUSSENSTUDIE / RECHTBANK!			
		27 MEI '94	⑩



Planta do subsolo

Basement plan

Planta do térreo

Ground floor plan

Planta do 1º piso

1st floor plan

Planta do 2º e
4º pisos

2nd and 4th floors
plan

